



## czech workforce

# Prague

## Employment and

## Median Wage

2011-2019

**Report: 2011-2019 data**

**Issued April 2020**

The material has been prepared for AmCham members; our Councils and Best Office Committees may make use of some of the data and conclusions for their own activities. Contact Katarina Bendikova at [kbendikova@amcham.cz](mailto:kbendikova@amcham.cz) for more information.

## key findings

In 2019, the employment growth in Prague, the capital city of the Czech Republic, in **both** the public and private sectors was **negative** (-0.3% and -0.1%, respectively); this trend started in 2018 in the private sector (-2.3% y-o-y). **Prague workforce reaches almost 576,000 people, a downward trend for two consecutive years from almost 587,000 in 2017** (up from 534,200 in 2011).

**Crisis of leadership?** In the private sector, managers recorded the fastest y-o-y growth of median wage in 2019, adding 9.5% y-o-y. Their median wage grew mainly in the past two years (especially in 2018; in the 2011-17 period, it rose by mere 1.3%). Still their share on total compensations has been shrinking for the past years as their total employment - unlike in other five occupational categories analyzed by this report - is below the 2011 level and has been going down steadily in the past years. **The number of managers in the private sector decreased by 19.1% since 2011 (-8,800 jobs).**

**The city of professionals?** In 2019, around **36%** of the total compensation in the **private sector** and **42.5%** of compensations in the **public sector** were paid to **professionals, a continuous upward trend for the past years**, unlike in other occupational categories where the trend is flat or opposite. Professionals in the public sector recorded the highest y-o-y median wage growth (by 11.1%) in 2019. Public sector professionals' wages grew faster than those of public sector managers. **In both sectors combined, professionals added 30,200 jobs since 2011 and 2,600 jobs in 2019.**

**Public sector more attractive for (scarce) technicians?** Technicians added 18,900 jobs in the 2011-19 period; but only 200 jobs in 2019, equally distributed among each of the two sectors. **Together with professionals, this was the only occupational category to add jobs in 2019.** The growth of technicians' median wages in both sectors has slowed down in 2019 (to 7.2% for both sectors). In 2019, **public sector technicians continued to earn higher median wage than their private sector counterparts and they earn almost as much as public sector professionals.**

**Blue collar job sector shrinking?** Clerical workers saw their median wage growth slowing down in 2019. Overall, employment of clerical workers decreased in 2019 and this occupational category experienced the lowest employment growth since 2011 (by 3.4%) out of the six occupational categories analyzed by this report. **In 2019, public sector clerical workers continued to earn higher median wage than their private sector counterparts.**

Craftsmen saw their median wages growth slow down in both sectors In the 2011-19 period and the total employment of craftsmen decreased by 13.3%, that is -5,900 jobs in the period (with -2,000 jobs in 2019 only, all in the private sector).

The total employment of plant, machine operators, assemblers grew by 11.1% since 2011 (+4,500 jobs), but the y-o-y growth rate was negative in 2019 (-1,300 jobs). In the private sector, their median wage grew at an increasing rate in the past years, reaching 8.5% in 2019. In the public sector, the pace of growth slowed down to 7.4% in 2019. **In 2019, public sector plant, machine operators, assemblers continued to earn higher median wage than their private sector counterparts.**



## Czech Workforce: Report

Employment and Median Wage by Occupation in Prague

### Workforce in Prague: Employment by General Occupation, 2011-2019

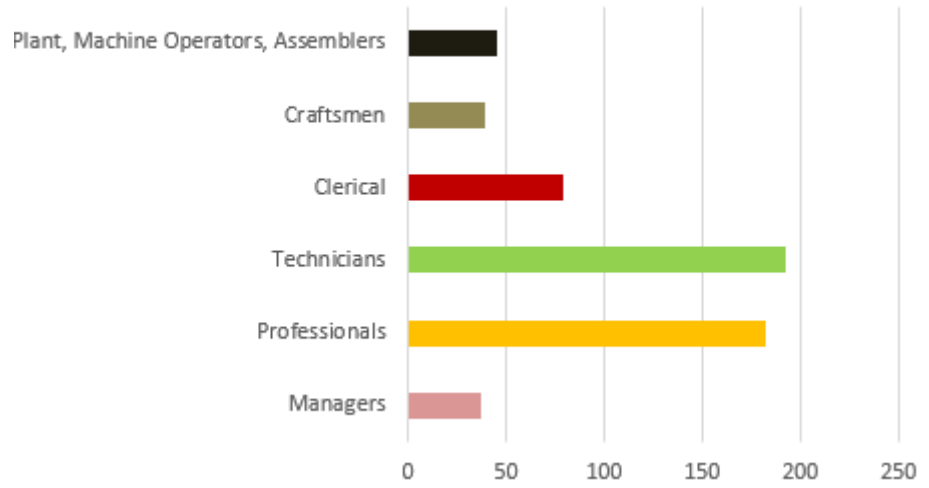
Prague workforce reaches almost 576,000 people, a downward trend for two consecutive years from almost 587,000 in 2017 (up from 534,200 in 2011). There are 1,800 white collar jobs more and 3,500 blue collar jobs less compared with 2018. The shift from blue collar to white collar jobs has continued, as cumulative change in the 2011-2019 period was +40,300 white collar and +1,200 blue collar jobs (blue collar jobs down by almost 10,000 in 2017-2019). Technicians (33.4%), professionals (31.7%) and managers (6.5%) make up 71.5% of all employment in Prague (69.5% in 2011).

The number of managers is below the 2011 level and has been going down steadily in the past years; it decreased by 2.6% y-o-y in 2019 (-1,000 positions) and by 19.1% since 2011 (-8,800 jobs). All other occupational categories, except craftsmen, exceed their 2011 values. Professionals and technicians recorded the fastest growth rates since 2011, reaching 19.8%, (+30,200 jobs) and 10.9%, (+18,900 jobs), respectively. Plant, machine operators, assemblers grew by 11.1% since 2011, but the y-o-y growth rate was negative in 2019 (-1,300 jobs).

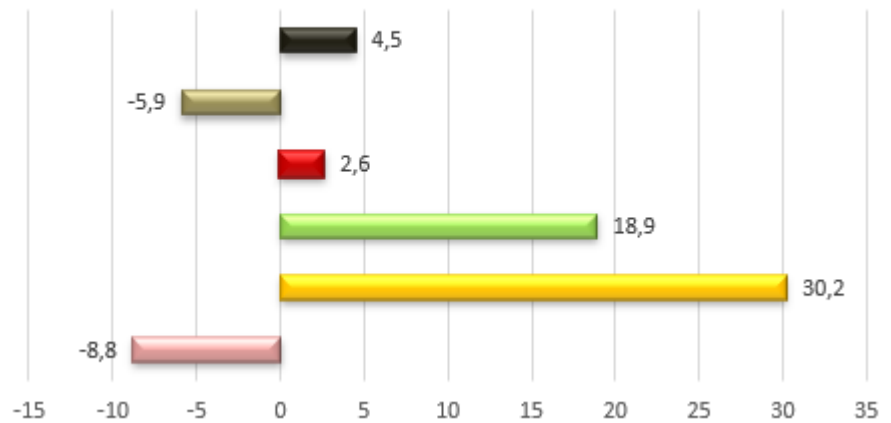
In the 2011-2019 period, more jobs were added in the private sector than in the public sector. The pace of growth slowed down in the private sector and flattened in the public sector in the past two years. In 2019, the employment growth in both sectors was negative (-0.3% and -0.1%, respectively); this trend started in 2018 in the private sector (-2.3% y-o-y).

After the ratio of private sector employees to public sector employees rose from 4.29:1 in 2011 to 4.41:1 in 2016 and 4.60 in 2017, it decreased for two consecutive years to 4.42:1 in 2019.

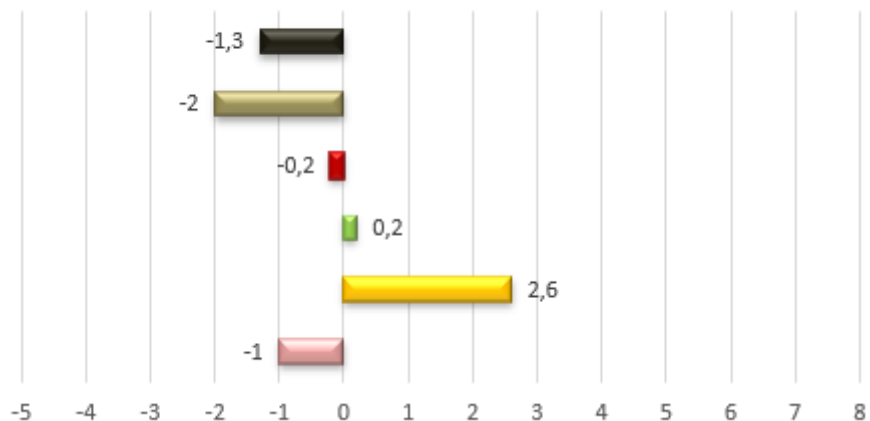
Prague, Employment by occupation, Thousands, 2019



Change in Employment, Thousands, 2011-2019



Change in Employment, Thousands, 2018-2019





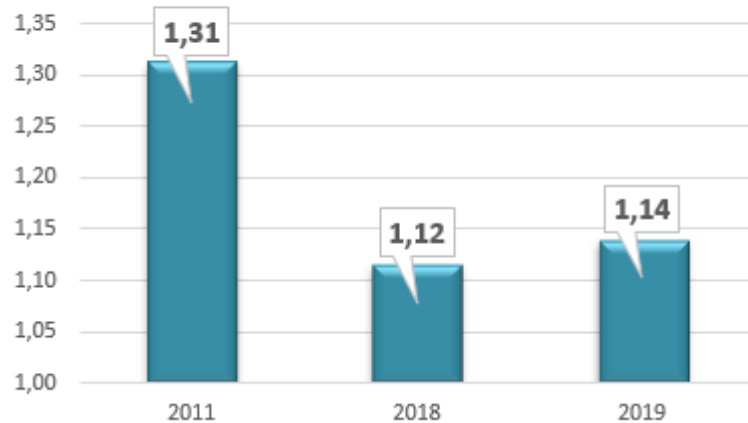
## Czech Workforce: Report

Employment and Median Wage by Occupation in Prague

### Workforce in Prague: Managers, Median Wage, 2011-2019

In the private sector, managers recorded the fastest y-o-y growth of median wage in 2019, adding 9.5%. Their median wage grew mainly in the past two years (especially in 2018; in the 2011-17 period, it rose by mere 1.3%). Still their share on total compensations has been shrinking for the past years as their total employment number - unlike in other occupational categories - is below the 2011 level and has been going down steadily in the past years (in the private sector; public sector managers' employment stayed flat in 2018 and decreased in 2019 by 200). The number of managers in the private sector decreased by 2.6% y-o-y in 2019 (-1,000 positions) and by 19.1% since 2011 (-8,800 jobs).

Ratio, Private: Public Sector Median Wage, Managers, 2011, 2018, 2019



**The pay gap between the private and public sector managers widened in 2019.** In 2011, the ratio private : public median wage of managers was 1.31 and descended to 1.14 in 2019. Public sector managers for the first time earned higher median wage than their private sector counterparts in 2017, but that trend reversed. **In 2019, the gap between manager and professional median pay widened in the private sector.**

Prague- Wages, Managers, 2011, 2018, 2019





## Czech workforce: report

Employment and Median Wage by Occupation in Prague

### Workforce in Prague: Technicians, Median Wage, 2011-2019

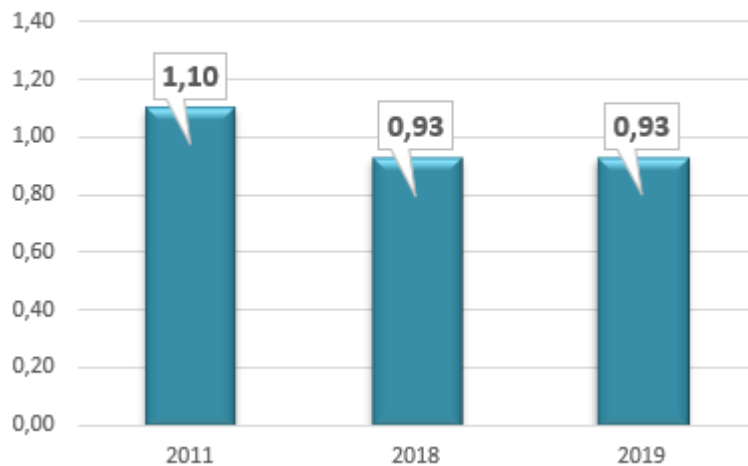
Technicians added 18,900 jobs in the 2011-19 period; but only 200 jobs in 2019, equally distributed among each of the two sectors. **Together with professionals, this was the only occupational category to add jobs in 2019.**

The employment level of professionals and technicians **in the public sector** has remained similar since 2011, with the difference oscillating around 800-1,500 jobs (currently in favor of professionals). In the private sector, the difference is currently around 10,000 jobs in favor of technicians (with professionals number rising faster).

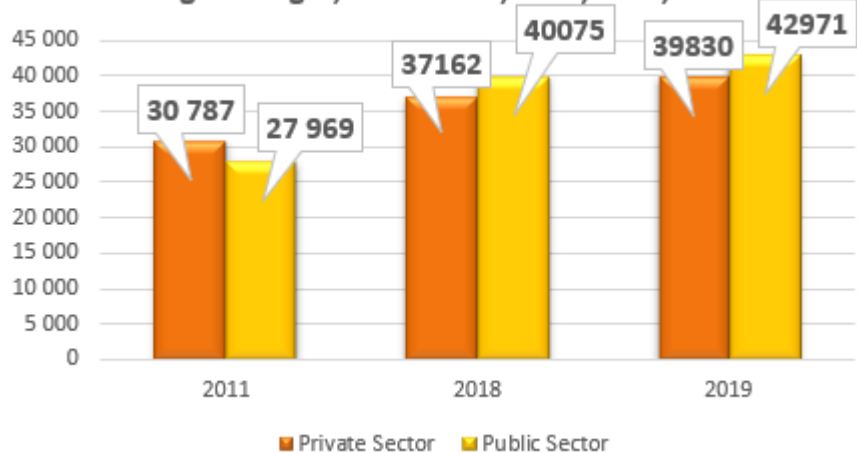
The growth of technicians' median wages in both sectors has slowed down in 2019 (to 7.2% for both sectors) after past years of increasing pace of growth of up to 9-10%.

The pay gap between private and public sector technicians did not change significantly in 2019, with **public sector technicians continuously earning higher median wage than their private sector counterparts.**

Ratio, Private: Public Sector Median Wage, Technicians, 2011, 2018, 2019



Prague- Wages, Technicians, 2011, 2018, 2019





## Czech workforce: report

Employment and Median Wage by Occupation in Prague

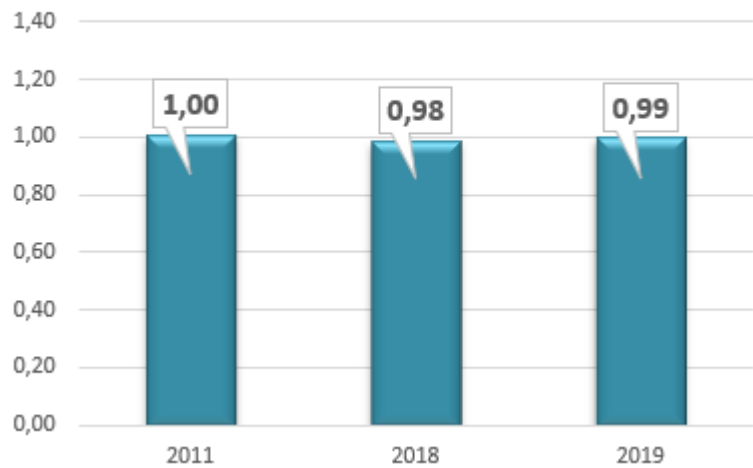
### Workforce in Prague: Plant, Machine Operators, Assemblers, Median Wage, 2011-2019

The total employment of plant, machine operators, assemblers grew by 11.1% since 2011 (+4,500 jobs), but the y-o-y growth rate was negative in 2019 (-1,300 jobs).

In the private sector, their median wage grew at an increasing rate in the past years, reaching 8.5% in 2019. In the public sector, the pace of growth slowed down to 7.4% in 2019.

The pay gap between the private and public sector plant, machine operators, assemblers narrowed in 2019, but **public sector plant, machine operators, assemblers continued to earn higher median wage than their private sector counterparts.**

Ratio, Private: Public Sector Median Wage, Plant/Machine Operators, 2011, 2018, 2019



Prague- Wages, Plant/Machine Operators, 2011, 2018, 2019

