

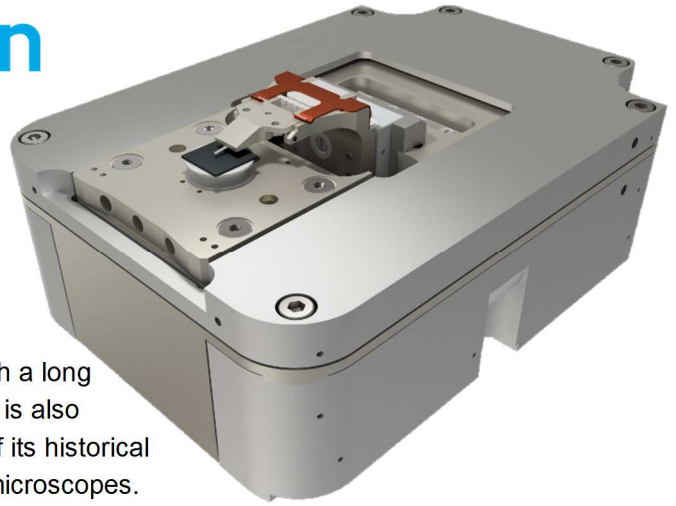


# NenoVision

## About company

NenoVision was established in 2015 as a spin-off of the Brno University of Technology and Central European Institute of Technology (CEITEC) in the Czech Republic.

The company is located in Brno, which is a university city with a long and proud tradition in developing scientific instruments. Brno is also referred to as the “Mecca of electron microscopy” because of its historical involvement in the development and production of electron microscopes.



## LiteScope™ - Scanning Probe Microscope designed for easy integration into the Electron Microscopes.

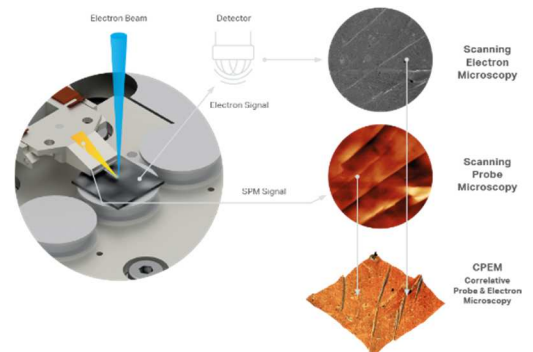


The combination of complementary **SPM** and **SEM** techniques enables to use the advantages of both commonly used microscopy techniques. **utilizing advantages of complementary techniques and enable extend SEM imaging capabilities by**

- 3D topography Visualization
- Magnetic properties
- Electrical and conductivity properties

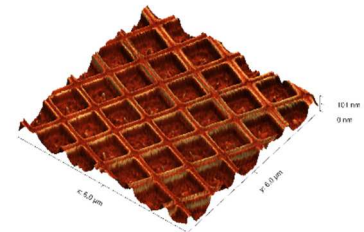
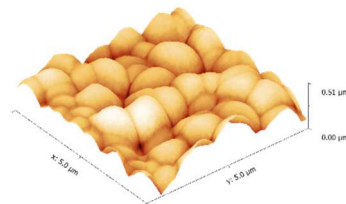
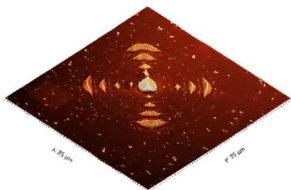
## Correlative Probe and Electron Microscopy

Correlative microscopy is an approach that benefits from the imaging of the same object by two different techniques. It enables simultaneous SPM and SEM measurement and direct true correlation of obtained images.



## The LiteScope™ has a wide range of applications, from basic academic research to failure analyses in industry.

- Materials science and Nanotechnology
- Semiconductors, solar cells, memory devices, MEMS & NEMS
- Surface science



CPEM technology is the first of its kind on the market to allow measurement of SPM and SEM in the same place and at the same time using the same coordination system.

Contact us and we will gladly introduce you LiteScope™ and the CPEM technology.

**NenoVision s.r.o.**  
Purkyňova 649/127  
612 00 Brno, Czech Republic  
[www.nenovision.com](http://www.nenovision.com)

**Ing. Jan Neuman Ph.D.**  
Executive Director  
[jan.neuman@nenovision.com](mailto:jan.neuman@nenovision.com)  
+ 420 605 287 732